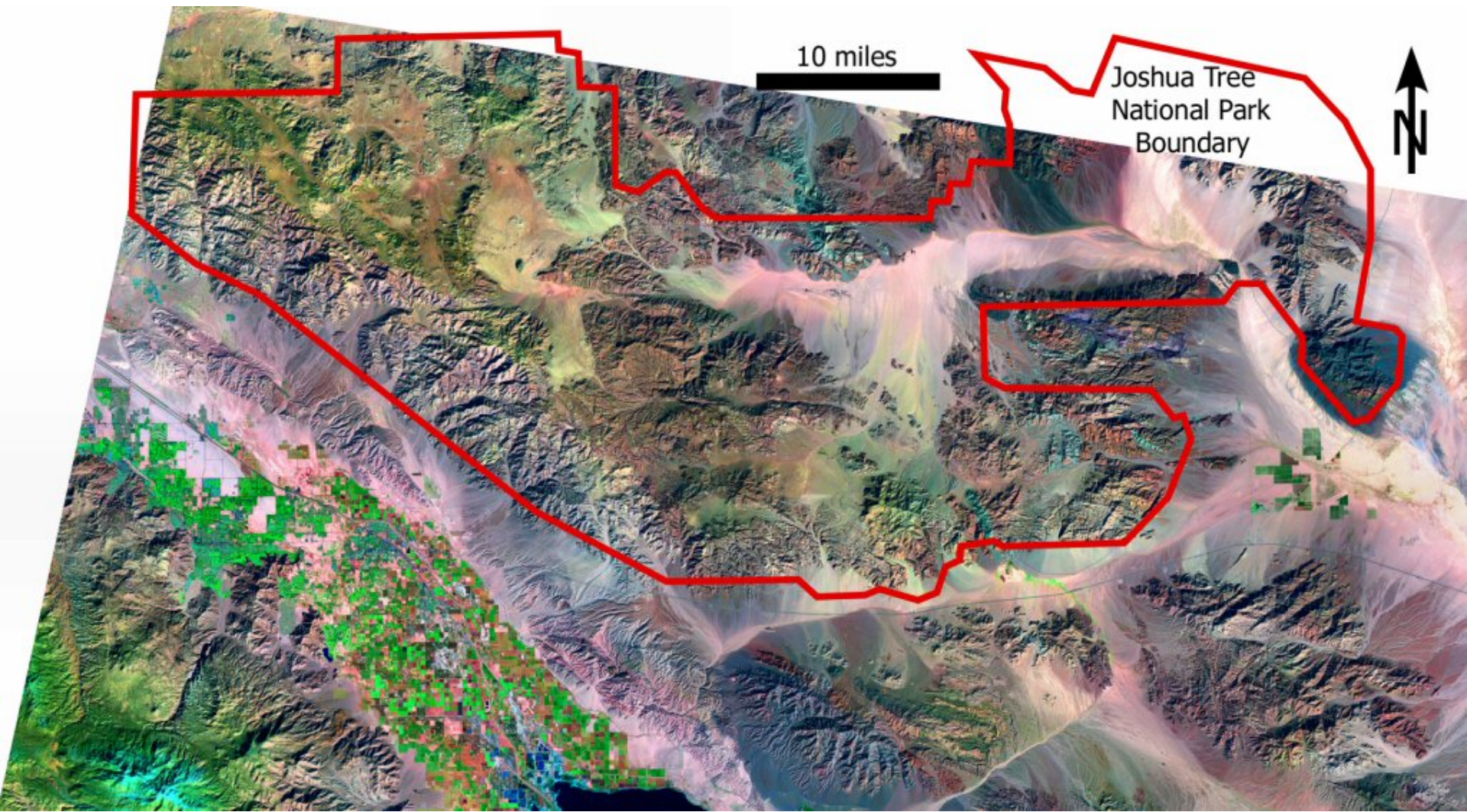


Tonight's Topic:



2004 SDAG Field Trip
Joshua Tree National Park





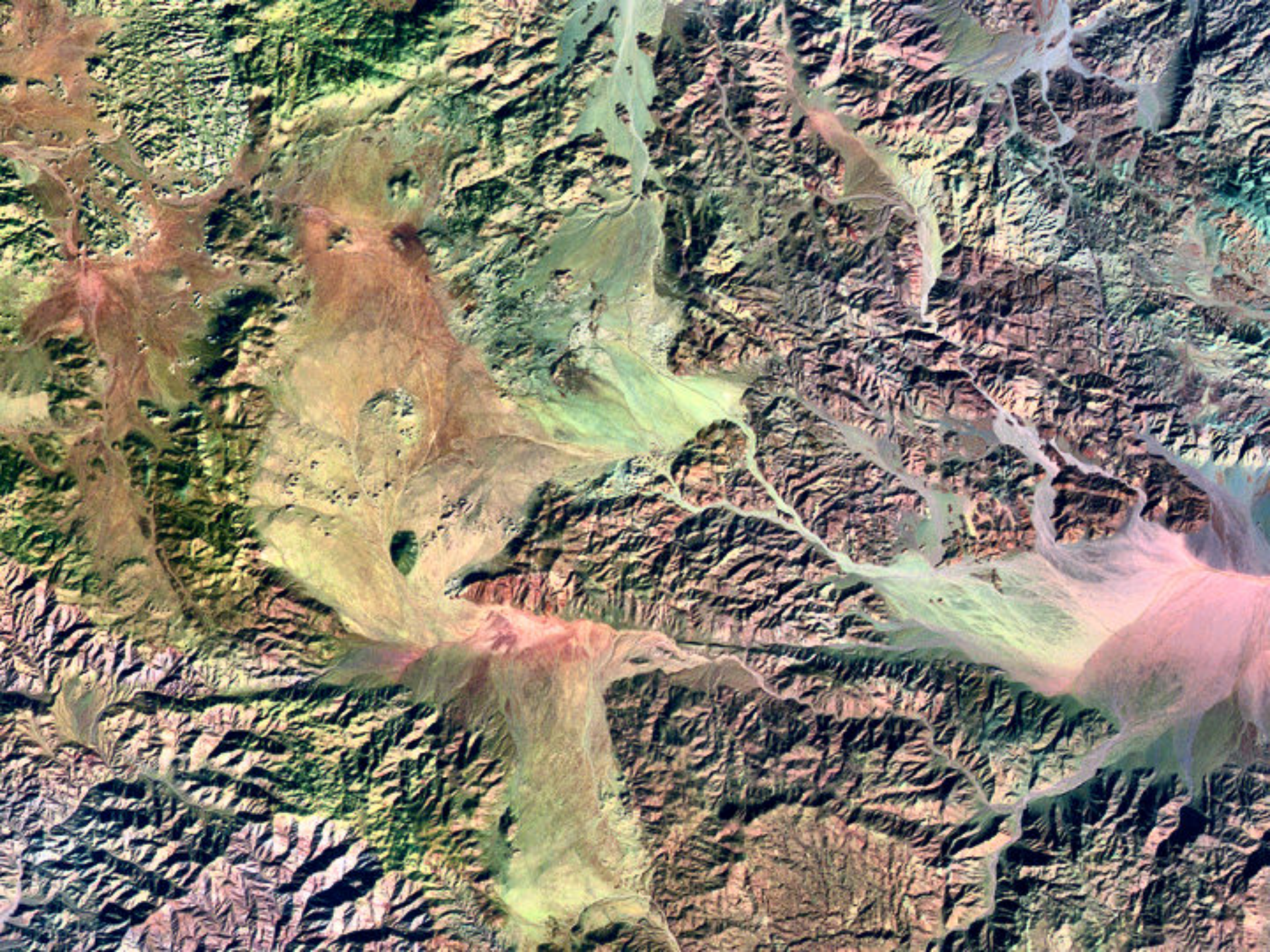
10 miles

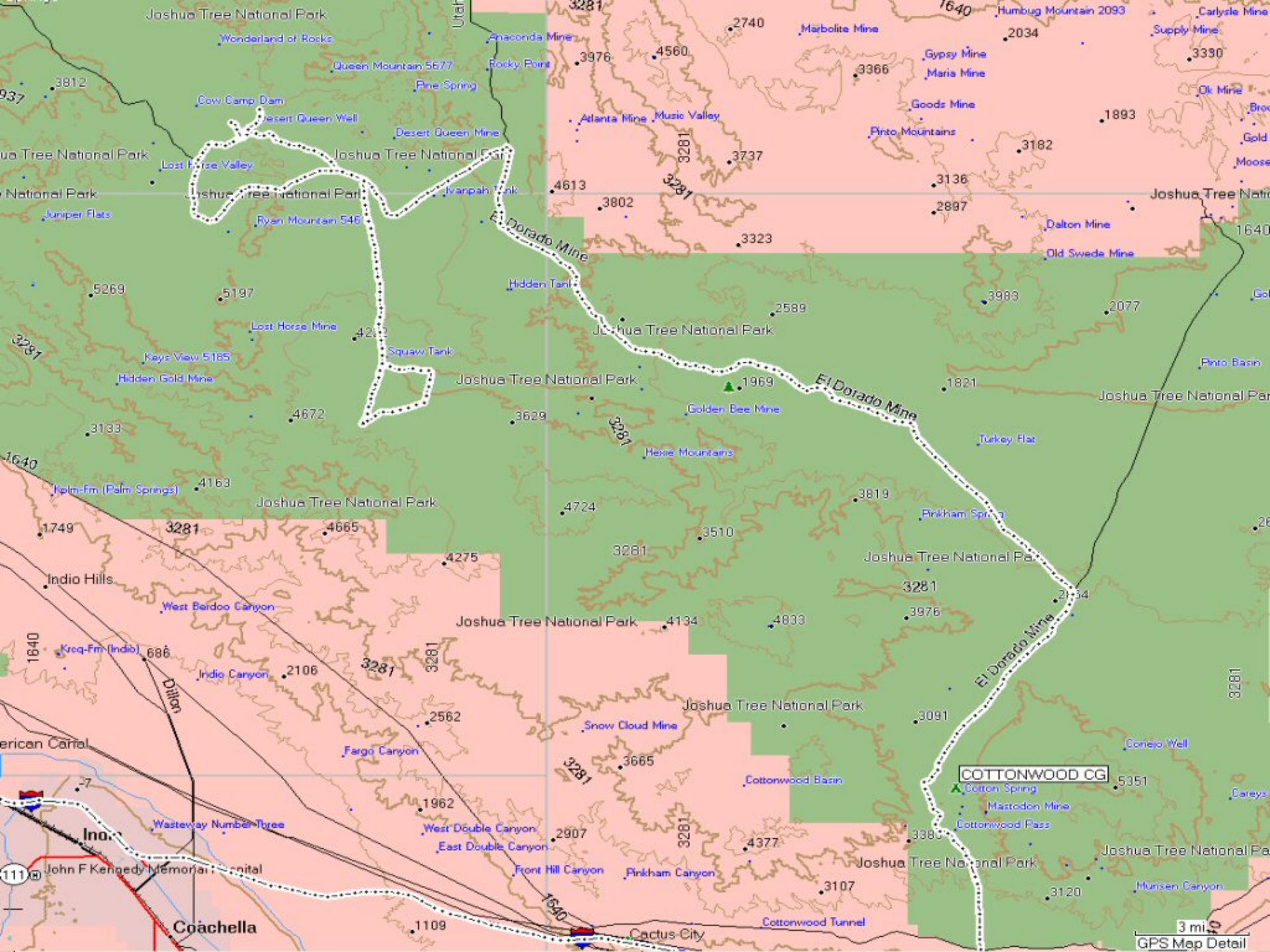
Joshua Tree
National Park
Boundary





North
(approximate)

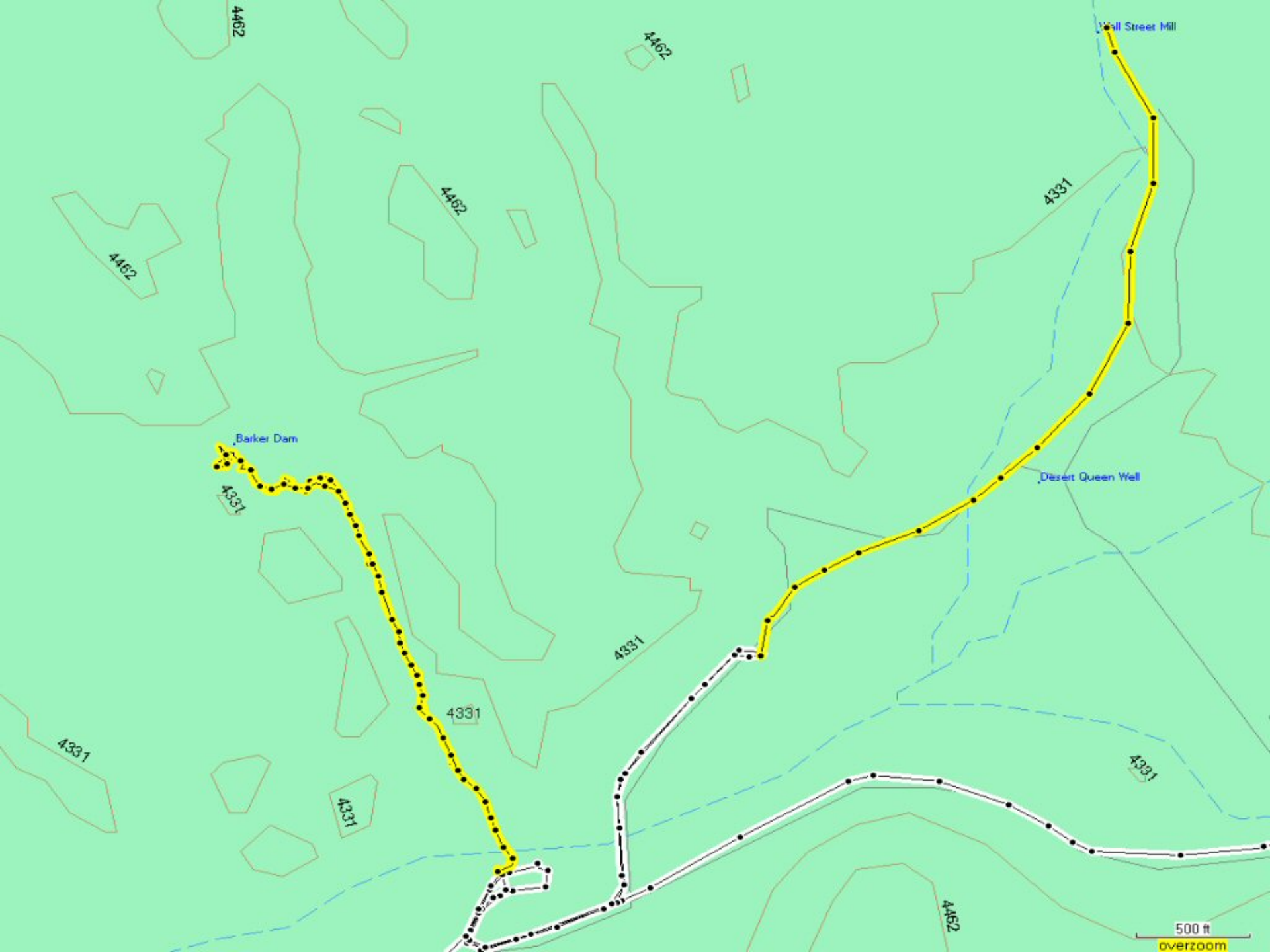




COTTONWOOD CG

3 mi
GPS Map Detail





4462

4462

Hill Street Mill

4331

4462

4462

Barker Dam

4331

Desert Queen Well

4331

4331

4331

4331

4331

4462

500 ft

overzoom





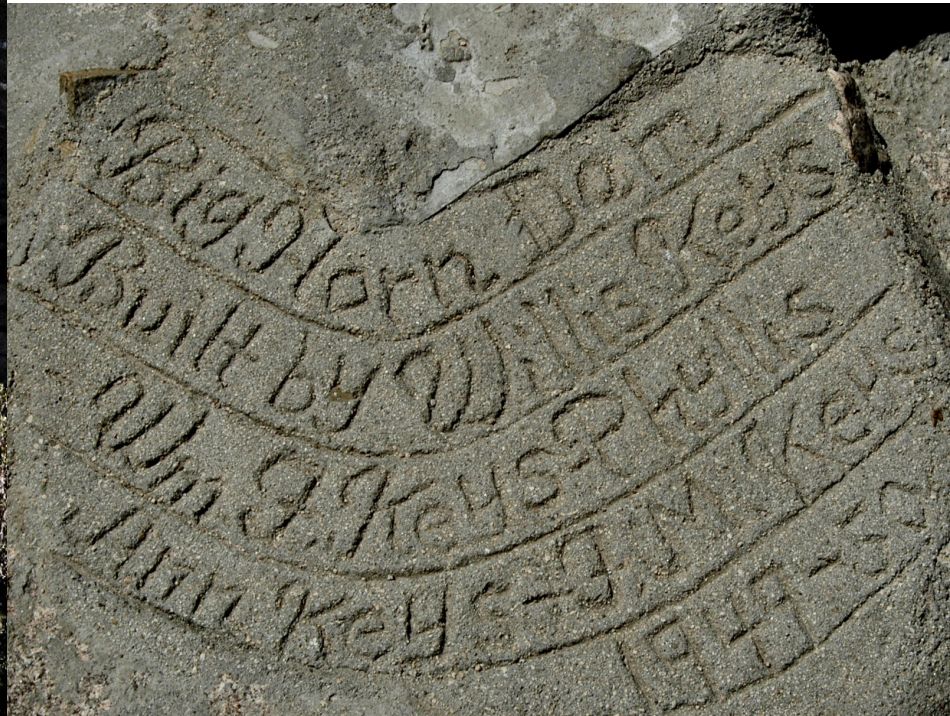


Barker Dam





Barker Dam





Barker Dam, through the eyes of Carole Ziegler





Hiking around, a la Carole Ziegler





Wall Street Mill



Wall Street Mill



Wall Street Mill

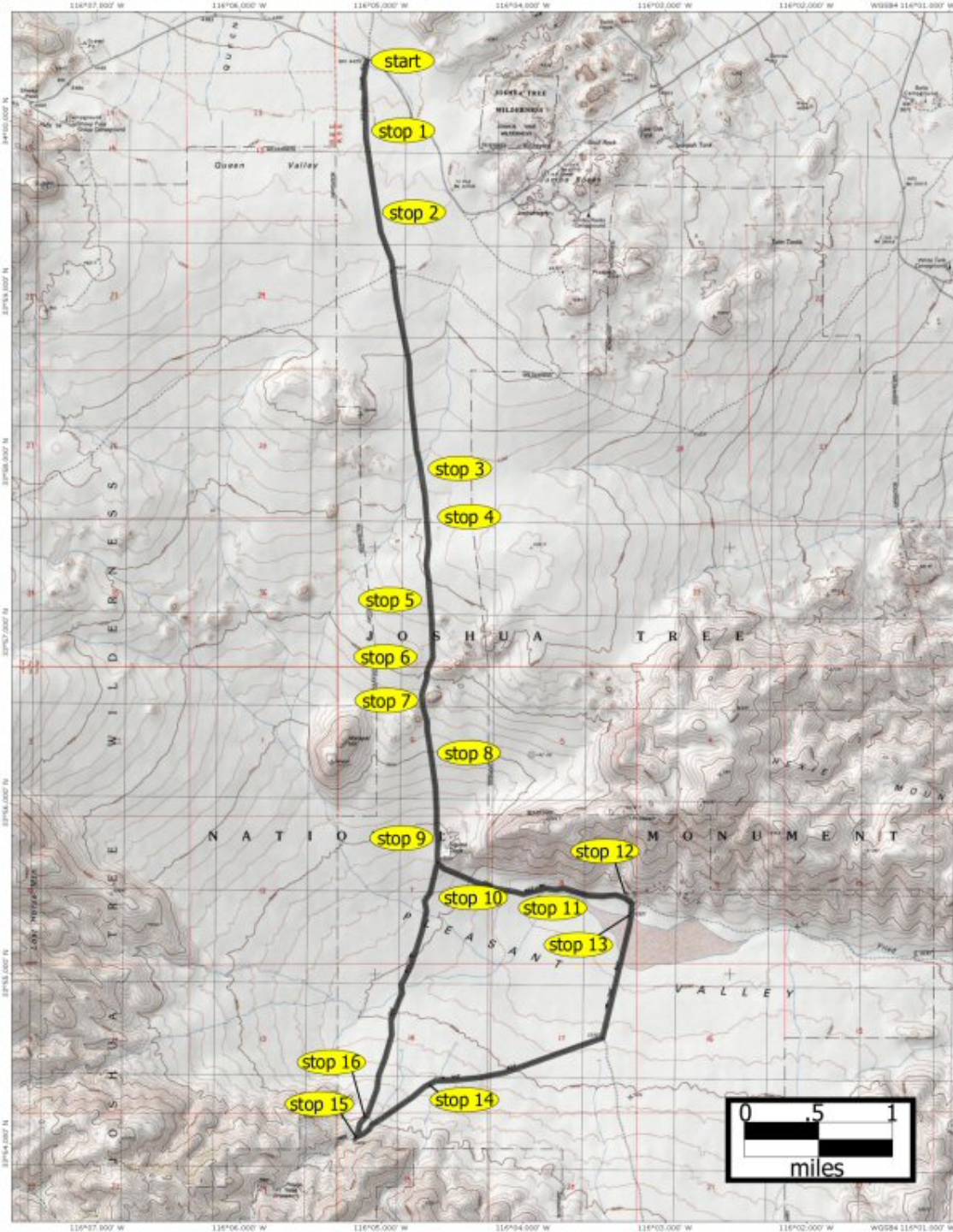


Dee Trent Talks About Petroglyphs





18-Mile Geology Loop



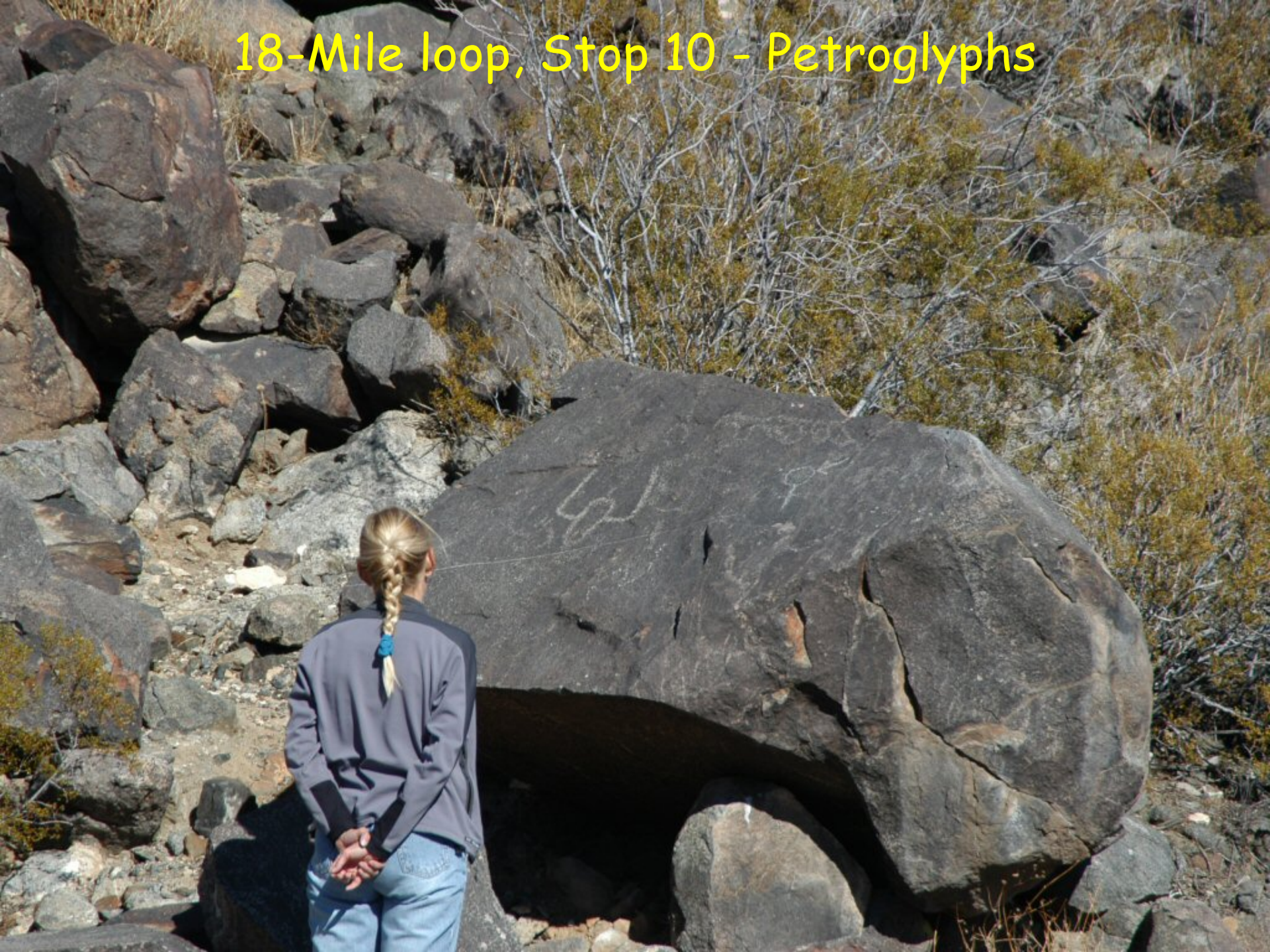
18-Mile loop, Stop 9 - Malapai Hill



Gneiss / Monzonite Contact near stop 10



18-Mile loop, Stop 10 - Petroglyphs



18-Mile loop, Blue Cut Fault



18-Mile loop, Stop 12 - Gold Coin Mine





Dee Trent
highlights the
Blue Cut Fault

SDAG Visits the Gold Coin Mine



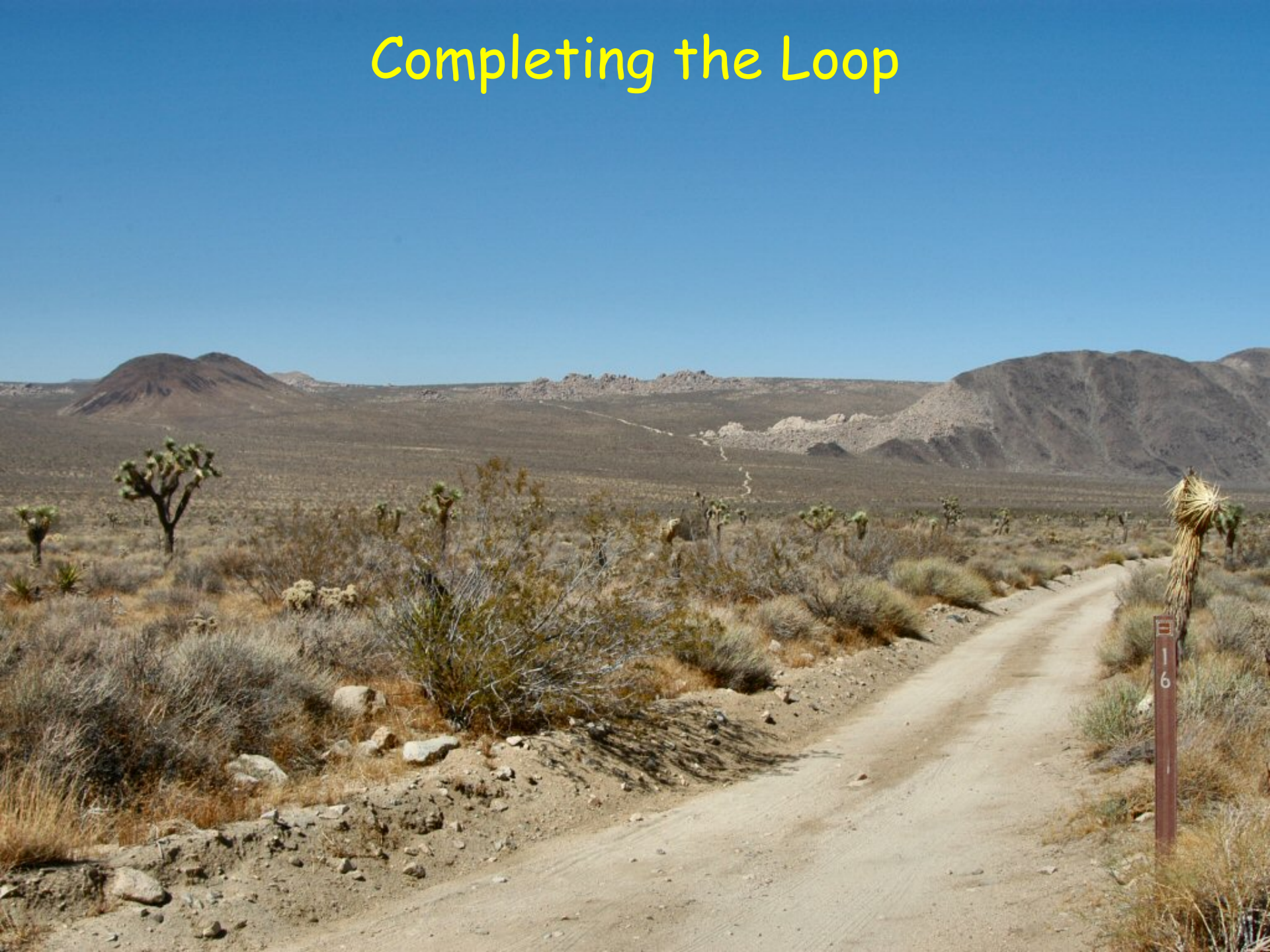
Looking back at Stops 9 and 10



Looking back at Stops 9 and 10



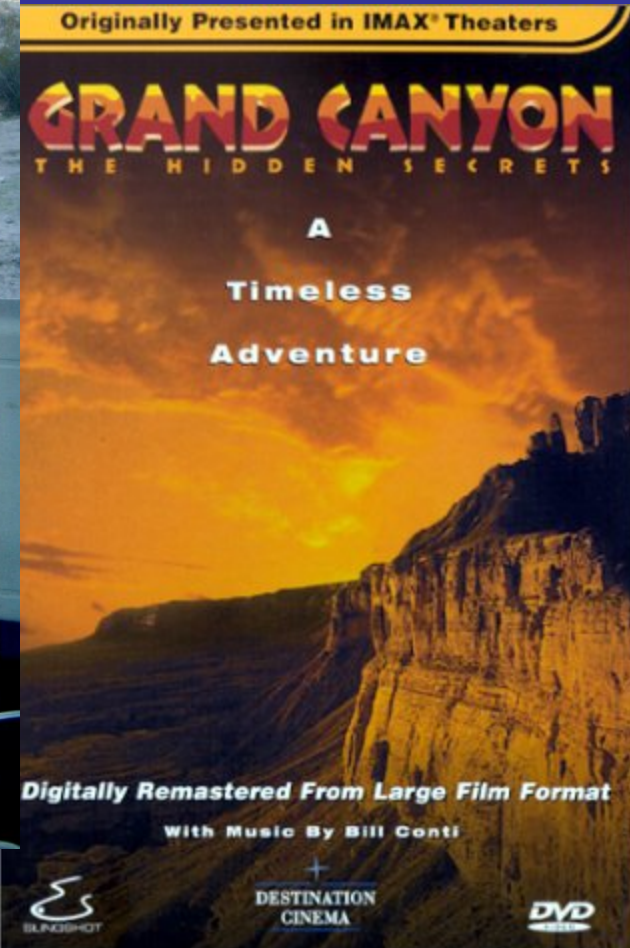
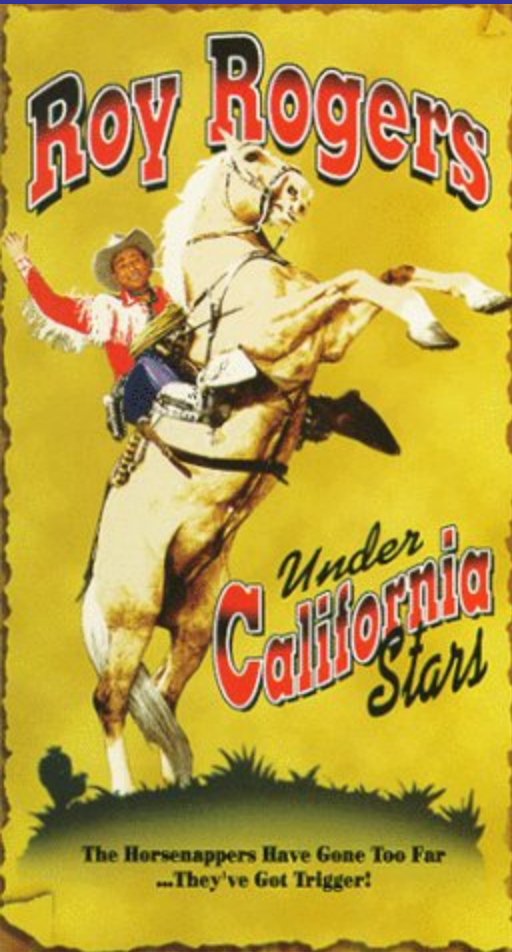
Completing the Loop



Cottonwood Campground (it's in there somewhere...)



Cottonwood Campground



Sunday morning: Cottonwood Spring



Sunday morning: there's a mine here somewhere...



Sunday morning: top o' the mountain



Sunday morning: top o' the mountain



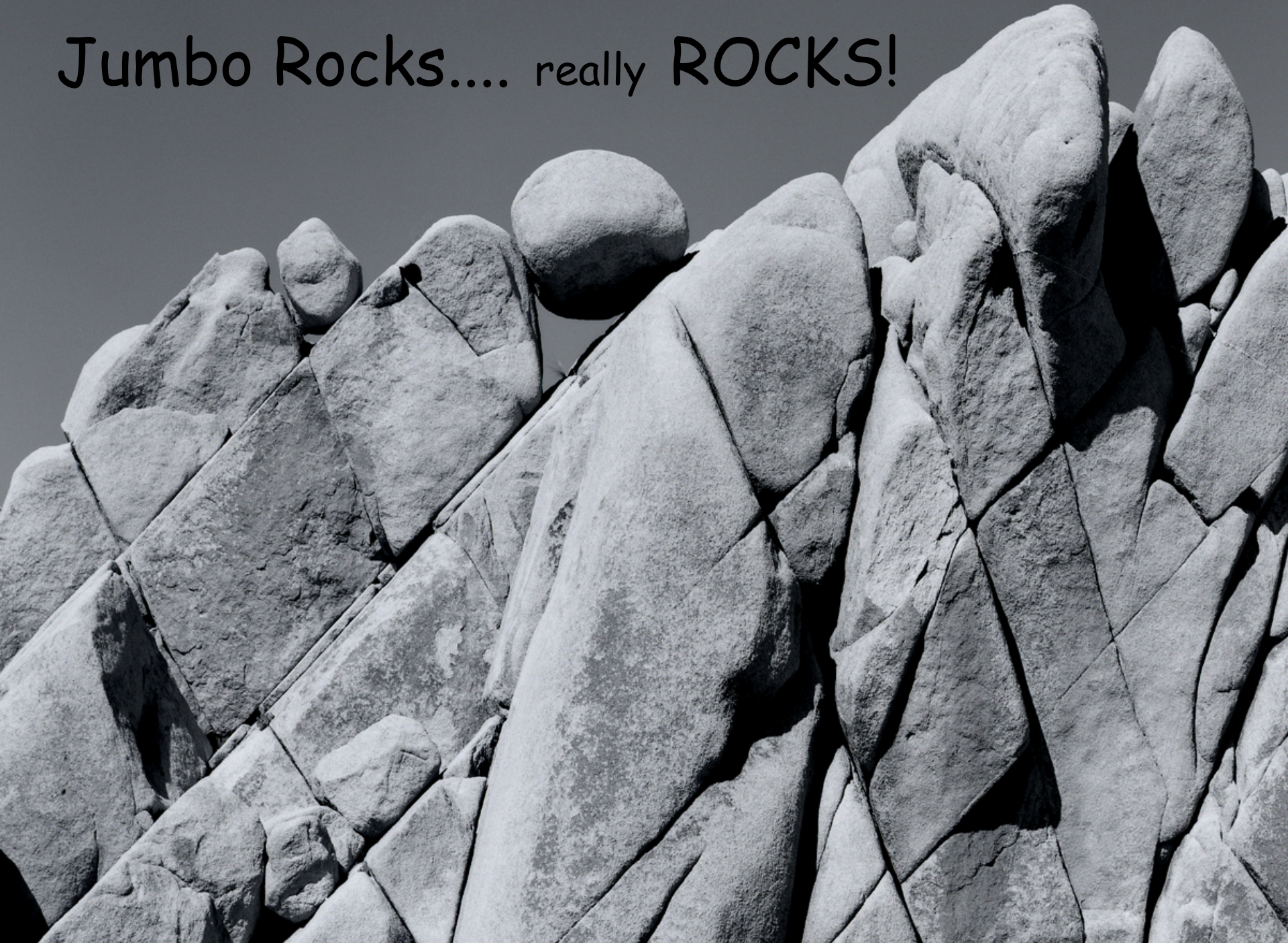
What Might Have Been: The Walk to Malapai Hill



What Might Have Been: The Walk to Malapai Hill



Jumbo Rocks.... really ROCKS!





Hidden Valley

The End

